



East Peckham Primary School

To know more, do more, remember more

Newsletter

Term 2 Week 7

Friday 12th December 2025

Dear parents and carers,

Apologies for a short message from me this week - I was unexpectedly busier than planned! Speaking of which - many thanks to everyone for the phenomenal feedback that was shared with the OFSTED inspectors this week - via the questionnaire, direct emails and speaking to the inspectors on the gate. The donation of cakes and biscuits to the staffroom were also appreciated! Unfortunately the process does not allow me to communicate the outcome just yet - but I can share that I could not be prouder of our children - they shared exactly what it was like to be a pupil here and 'used their words' perfectly to make sure the inspectors got the message! I am also incredibly grateful to our hardworking staff, who jumped to the challenge of being inspected in just the 2nd week of inspections since OFSTED restarted, entering into a new framework, and being able to demonstrate exactly what we offer here. I am sure you will join me in wishing them an even more relaxed break when the Christmas Holiday finally arrives... However, it is not here yet, so please read the newsletter completely as it is a busy week coming up!

Looking forward to seeing you at the Christmas Fair tomorrow - doors open at 12, and the raffle will be called at 2:30pm. If you have made any Christmas-sy baked goods for us to sell then please drop off to the school office between now and the start of the fair at 12pm tomorrow.

THANK

YOU

Mrs Elliott



★ EPS Awards ★

Congratulations to our EPS Award winners this term - I am so sorry that I could not celebrate with you (due to OFSTED needing to provide the final feedback) but the teachers have told me that it was a lovely event, which was well-supported by your proud family and friends - well done!

Lemurs	Otters	Meerkats	Rhinos	Penguins	Lions	Dolphins
Year R	Year 1	Year 2	Year 3	Year 4	Year 5	Year 6
Felicity A	Frankie T	Rosa T	Harry E	Bradley R	Josh W	Phoebe G

★ Stars of the Week ★

In our Friday Celebration Assembly we have been celebrating children who have taken responsibility for their actions :

Lemurs	Otters	Meerkats	Rhinos	Penguins	Lions	Dolphins
Year R	Year 1	Year 2	Year 3	Year 4	Year 5	Year 6
Isla-Rose O'R	Rome C	Arlo E	Lacey B	Phoebe J	Sidney G	Jason V

Many thanks to **Scarlett M** for joining Mr Atkins to present assembly today.

Attendance

Attendance and punctuality are very important and we have class targets of 96%+. Please make sure that the children attend every day to ensure their class can achieve their targets. Holidays during term-time will not be authorised, this includes those where we are notified both before and after they occur.

Lemurs	Otters	Meerkats	Rhinos	Penguins	Lions	Dolphins
Year R	Year 1	Year 2	Year 3	Year 4	Year 5	Year 6
95%	95%	99%	94%	97%	86%	93%
🙄	🙄	😊	🙄	😊	😞	🙄

Year 4 Science

Penguins investigated why most volcanoes occur in the same locations as earthquakes. Their discussions focused on the Pacific and Australian tectonic plates on either side of New Zealand. The Penguins also had a great time creating their own class volcano eruption.



Year 6 visit to the Houses of Parliament



Houses of Parliament



Westminster Hall

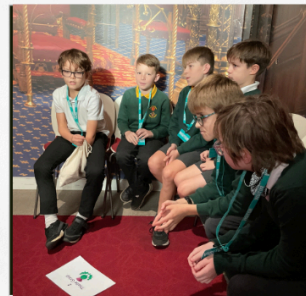


House of Lords



Workshop

Our trip to Parliament Year 6



Team challenge

The school trip was so much fun! We found out under 1% of people get to visit the Houses of Parliament, so we were lucky to be part of that. Sofia P

It was my favourite place I've ever been to!
Theo M

It was amazing and interesting and I will always remember it.
Kaelum S

It was really fun and I loved seeing the House of Lords. No one is allowed to sit on their benches! Natalie B

I really enjoyed the trip because I learnt so many new interesting things about democracy. Phoebe G



Trafalgar Square



King George V Monument



Walk through London

Clubs for Term 3 and Term 4

All clubs will be available for you to sign up for via Arbor, from 6pm this evening. If you are unable to sign up for a club then it means that it is full - so please email the office to be added to a waiting list. **Unless indicated, clubs led by members of staff run starting week beginning 12/01 and end in the week beginning 23/03.** For clubs that you sign up for by booking directly with the organiser, please follow their guidance for when they will run.

Monday	<ul style="list-style-type: none"> ● Years R-2 - Film Club with Mrs Sutcliffe ● Years 2-6 - East Peckham TaskMaster with Mr Atkins and Mrs Duffield ● <u>External</u> - Year R-2 - Multi-Sports - please book directly via the QR code on the flyer at the end of the newsletter. If numbers are low this may not go ahead.
Tuesday	<ul style="list-style-type: none"> ● Phonics Club @ 8.10am with Mrs Sinden (invite only) ● Years 1-2 cooking club with Mrs Stenning* (further information at the bottom) ● Years 3-6 - Drawing club with Mrs Bawden ● <u>External</u> - Karate - please book directly via info@samasoutheast.co.uk
Wednesday	<ul style="list-style-type: none"> ● <u>External</u> - Year 4-6 - Football Club with Lee - please book directly via lccoaching18@gmail.com
Thursday	<ul style="list-style-type: none"> ● Years R-3 - Mindfulness Singing and Colouring with Mrs Gardiner ● Years 3-6 - Creative Play Club with Mrs Richardson ● <u>External</u> - Year 3-6 - Multi-Sports - please book directly via the QR code on the flyer at the end of the newsletter. If numbers are low this may not go ahead. ● Year 6 (invite only) - Podcast Club with Mrs Duffield
Friday	<ul style="list-style-type: none"> ● <u>External</u> - Year R-3 - Football Club with Lee - please book directly via lccoaching18@gmail.com

*Cooking club has a cost of £3 per child for resources, the term will be split into 2x 5-week groups. Please take note of which dates you sign up for.

PE for Term 3

Please wear PE kit on these days - please be reminded that trainers need to be appropriate for sport, and that hoodies and zip-up tops are not permitted for health and safety reasons. Any questions then please speak to Mrs Askew, PE lead.

	Term 3 PE
Year R	Formal PE begins later in the year.
Year 1	Monday (indoor) and Tuesday (indoor)
Year 2	Monday (outdoor) and Friday (outdoor)
Year 3	Wednesday (outdoor) and Thursday (indoor)
Year 4	Wednesday (indoor) and Thursday (outdoor)
Year 5	Tuesday (indoor) and Thursday (indoor)
Year 6	Monday (indoor) and Tuesday (outdoor)

FOSIL - FOrest School Inspired Learning

Please make sure that your child brings in their complete outdoor learning clothing for the dates below. More information about the correct clothing required can be found on the [school website](#).

Week beginning:	Monday	Tuesday	Wednesday
19th January 2026	Year 3 / Year 5	Year 1	Year R
26th January 2026	Year 4 / Year 6	Year 2	Year R
2nd February 2026	Year 3 / Year 5	Year 1	Year R
9th February 2026	Year 4 / Year 6	Year 2	Year R
End of Term 3 - Start of Term 4			
23rd February 2026	Year 3 / Year 5	Year 1	Year R
2nd March 2026	Year 4 / Year 6	Year 2	Year R
9th March 2026	Year 3 / Year 5	Year 1	Year R
16th March 2026	Year 4 / Year 6	Year 2	Year R
23rd March 2026	Year 3 / Year 5	Year 1	Year R
30th March 2026	Year 4 / Year 6	Year 2	Year R


Using Our Words

What have you been learning this week?

Mia S, Jemima W, Esme W (Y4) - We have been learning about emotive language. Emotive language is using powerful words to persuade somebody. We watched a Christmas advert about a Penguin who keeps seeing others with boyfriends or girlfriends, and he is sad because he is not in love with anyone. There is then an ending which is a happy one - but we won't spoil it for you. We wrote sentences to describe it, using our emotive words. Examples shared 'Monty is feeling blue and depressed because he doesn't have another penguin to play with'. 'It is important Monty gets a penguin friend so that he isn't lonely, isolated or glum anymore', 'Please give Monty a kind and positive penguin as he is lonely and isolated. I am begging you to give him company for Christmas'.

Ivy M (Y2) - We have been learning about 2D and 3D shapes and how many vertices they have. We know how some shapes can be flat and some can be picked up, like spheres, cubes and cuboids. We have also been learning about symmetry where you can fold in the middle and each side is the same. If they cannot be folded exactly then they are not symmetrical.

EAST PECKHAM PRIMARY SCHOOL'S DEVELOPMENT PLAN



Academic Communication

Use our words to talk about what we're learning.

Helps us with schoolwork.

Thank you to our Christmas Fair Raffle Donators!

30 MIN HELICOPTER RIDE

OVER £500 TO BE WON IN VOUCHERS

INCRECIBLE RAFFLE PRIZES!

EAST PECKHAM PRIMARY SCHOOL CHRISTMAS FAIR 13TH DECEMBER

LOCAL PUB MEAL

CLAY PIGEON SHOOTING

CASE OF BEER

AFTERNOON TEA

CARVERY FOR 4

TENNIS SESSIONS

DANCE LESSONS

JEWELLERY GIFT SET

A HUGE THANK YOU TO ALL OUR GENEROUS PRIZE GIVERS

INCRECIBLE RAFFLE PRIZES!

EAST PECKHAM PRIMARY SCHOOL CHRISTMAS FAIR 13TH DECEMBER

A HUGE THANK YOU TO ALL OUR GENEROUS PRIZE GIVERS

T & C

Brookside

VENTURE STUDIO MAIDSTONE PRESTIGE GUARDING

venture studios™

SHIRES OAST

Brewers fayre

A2B CHARTERS

THE BELL INN

ingenium

ASH Special Works

BUSH, BLACKBIRD AND THRUSH

EAST PECKHAM KEBAB SHOP

TREND TONIC

HAPPY NAT YOGA

WEST KENT SHOOTING SCHOOL

PRESTIGE GUARDING LIMITED

INGENIUM BUSINESS

BROOKSIDE GARDEN CENTRE

THE BELL GOLDEN GREEN

EH Smith Builders Merchants

BAXALL

Bush, Blackbird & Thrush EAST PECKHAM

EAST PECKHAM KEBAB & PIZZERIA

TONBRIDGE BREWERY

Katie B's TENNIS IN THE Park

LUCY ROBINS SCHOOL OF DANCE

ASH SPECIAL WORKS LTD

TONBRIDGE BREWERY

SHIRES OAST

EH SMITH

BREWERS FAYRE

T&C ENGINEERING AND MAINTENANCE

KATIE B'S TENNIS IN THE PARK

Reminder: Christmas Arrangements

Please find below the arrangements for all of the Christmas events that will take place later in the term:

Monday 15th December - **EYFS/KS1 Nativity - dress rehearsal in-school**

- There will be an in-school dress rehearsal for the other classes to watch. This performance is not for parents. Please can we ask that all children in Years R, 1 and 2 are in school on this day.
- As you are aware, holidays during term-time are never authorised, however if you are planning to not bring your child to school this week, please make sure that you let the school know. Nativity performances are inevitably short of a few children due to winter coughs and colds, but if we are aware of children being absent for holidays then it means we can arrange parts accordingly. Organising a performance for 90 children is challenging enough as it is for the EYFS/KS1 team, so please support us by ensuring we know who will be in attendance.

Tuesday 16th December - **EYFS/KS1 Nativity - younger siblings welcome**

- Parents and family members are invited to watch their children's nativity at **9:15am**.
- It will last for approximately 30-45 minutes.
- Younger siblings are welcome to attend this performance - however if they become restless please can we ask that you step outside so as to not disturb the children while performing.
- If you attend this performance, please can you not also attend the one tomorrow so that we have enough space to fit everyone in the school hall.
- Grandparents and/or extended family are welcome, but please be mindful of our limited hall space.
- You do not need to book places in advance.

Wednesday 17th December - **EYFS/KS1 Nativity - adults only**

- Parents and family members are invited to watch their children's nativity at **2:00pm**.
- It will last for approximately 30-45 minutes.
- Children can be collected and taken home as soon as they are changed back into school uniform.
- Please do not attend this performance if you have already attended yesterday's performance so that we have enough space to fit everyone in the school hall.
- This is an adult-only performance, please do not bring any younger siblings.
- Grandparents and/or extended family are welcome, but please be mindful of our limited hall space.
- You do not need to book places in advance.

Thursday 18th December - **Christmas Dinner while wearing Christmas Jumpers**

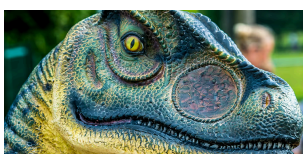
- Children are welcome to come to school in a Christmas jumper today (with their own clothes on the bottom half).
- There is no payment required in exchange for wearing a Christmas jumper.
- Christmas dinner will be served today - please order via Arbor (the option on the app may not have changed, but the meal will definitely be Christmas dinner, just select 'Main' or 'Veggie' no jacket potato option).
- **Lunch menu for wednesday 17th will be Chicken Sharwarma**



Reminder: Attendance Prize for Term 2

We are very pleased to share that we have been gifted a £35 Family Ticket voucher to [Mulligan's Dino Golf](#) in Tonbridge and we will be offering this as an attendance prize, to award at the end of Term 2. A reminder about how our attendance prizes work - every child who attends for a full week from

The logo for Mulligan's, featuring the word 'MULLIGAN'S' in a white, bold, sans-serif font on a black rectangular background.



Monday to Friday will have their name entered into the draw to win. If a child is off, they will still have a chance of re-entering the following week, but obviously the more full weeks of attendance mean more entries into the draw! Good luck - and many thanks to Tim at Mulligan's for his kind donation - please do support this local business if you fancy a fun day out in Tonbridge!

Dates for your diary

New dates added are in **red**. More information about the events will be shared nearer the time.

Saturday 13th December	Christmas Fair	Whole school
Monday 15th December	EYFS/KS1 Nativity Dress Rehearsal in the afternoon - all children to be in school please.	Whole school
Tuesday 16th December	EYFS/KS1 Nativity - siblings welcome - 9:15am	EYFS/KS1 parents
Wednesday 17th December	RockSteady concert - am	Parents welcome
Wednesday 17th December	EYFS/KS1 Nativity - adults only - 2:00pm	EYFS/KS1 parents
Thursday 18th December	Christmas Dinner Day - children can wear Christmas jumpers too!	Whole school
Friday 19th December	End of Term 2	Whole school
Monday 5th January	Start of Term 3	Whole school
Tuesday 6th January	Zoolab Visit	Reception & Year 1
Friday 16th January	Winter Disco (more details to follow)	Whole school
Friday 6th February	Bingo! (more details to follow)	All parents welcome

Designated Safeguarding Team

Mr Atkins - Mrs Elliott - Miss Ray - Mrs Sinden - Miss Worrall

Please notify any of the team if you have any concerns via dsl@eastpeckhamprimary.org.uk

Contact us

Headteacher - **Mrs Kate Elliott**
Chair of Governors - **Mrs Katie Bennett**

<https://www.east-peckham.kent.sch.uk/>
01622 871268